



tel 073 750 9697 fax 086 684 1544 www.motocomp.co.za po box 59 pennington 4184

MotoComp Accessories Catalogue for 2102



2011 COLLECTION

- 3 - ALUMINUM MESH
- 4 - ADJUSTABLE REAR SET
- 6 - MOTORCYCLE CRASH PAD
- 9 - MOTORCYCLE FORK PROTECTORS
- 10 - QUICK THROTTLE KITS
- 12 - FOOT PEGS
- 14 - ADJUSTABLE STRUT BAR
 - BRAKE CYLINDER COOLER
- 15 - MASTER CYLINDER CAP
 - EXTRA UPPER CLAMP
 - HANDLEBAR RISER
- 16 - SILICONE RADIATOR HOSE KITS
 - MOTORCYCLE HEAT EXCHANGER
- 18 - BAR ENDS
- 20 - DIRT BIKE FOOTPEGS
- 22 - AIR VALVE
- 24 - OIL CAP
- 26 - OIL DRAIN BOLT
- 28 - SWINGARM SPOOLS
- 30 - CARGO HOOK
- 32 - BOLT CAPS
- 33 - OIL PIPE CLIPS
- 34 - LEVER BOOTS
 - CLUTCH CABLE BOOTS
- 35 - HANDGUARD
- 36 - REAL CARBON FIBER GAS CAP PROTECTOR
 - DRINK HOLDER
- 37 - CARBON FIBER KEY CHAIN
 - FRONT FORK STROKE SENSOR
 - QUICK RELEASE
- 38 - HIGH FLOW AIR FILTER
- 40 - FRONT FORK NUT



COMPANY PROFILE

Performance and Convenience

Yet Chang Mobile Goods Co., Ltd. of Taiwan is a diversified and well-developing company, mainly focus on improving all kinds of vehicle's performance and conveniences by developing and researching kinds of parts and accessories.

All manufacture procedures in one Plant

The production line includes automobile, motorcycle and bicycle. As a leading company of this field, Yet Chang holds both quality and innovation; it also integrates whole processing procedures in one plant, such like metal forge, CNC milling and lathe.

Global Footprint

The Yet Chang production line among: motorcycle adjustable rear set, foot peg, crash pad, fork protector, radiator silicone hose, air filter. Customers come from the whole world. It also holds ISO 9001 and TUV certification years ago. At present, as a qualified OE parts supplier, Yet Chang also supplies parts for several well-known motorcycle brands, such like Ducati, Harley-Davidson, BMW etc.

QC PROCEDURE

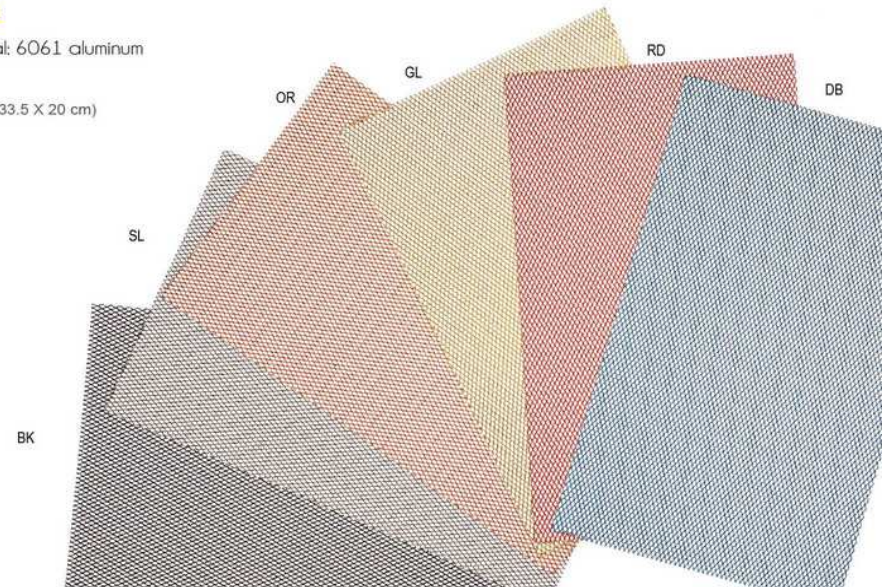


YC-426

Material: 6061 aluminum

SIZE

(L X W : 33.5 X 20 cm)





Ref. RS-KW03-GL

ADJUSTABLE REAR SET

-Full CNC Manufactured

More model requests, please contact NEX.

Material: 6061 aluminum

COLOR



Use the plastic protector on the end of foot peg and the toe peg for sliding well.

BRAKE PRESSOR SWITCH

Material: 6061 aluminum

COLOR



RS-001

RS-002

SIZE P1.25

P1.00





Ref. CP-101GR

MOTORCYCLE CRASH PAD

NEX Crash Pad reinforce the bodywork to prevent the damage and absorb the energy of a crash in the event of a impact.

CP-301

Material: Plastic
Color Available in Black and White



WT



BK

CP-101

Material: 6061 aluminum
Color Available in Black,Blue,Gold, Gunmetal,Orange,Titanium, Green,Silver and Red.



NY-101

Supply kits- Replaceable nylon inlay
Material: Plastic





YC-402

Supply kits- LED Light

*Simply plug into the plastic part and can provide riding safety at night time.



RD GR OR BL WT MM



Supply Kits- NEX Crash Pad Mounting Kits

Material: 6061 aluminum

More model requests, please contact NEX.

HONDA CBR1000RR



KAWASAKI Z1000



YC-402

Supply kits- LED Light

*Simply plug into the plastic part and can provide riding safety at night time.



RD GR OR BL WT MM



More model requests, please contact NEX.



QUICK THROTTLE KITS

Material: 6061 aluminum

Color Available in Black,Blue,Gold, Gunmetal,Orange,Titanium, Green,Silver and Red.

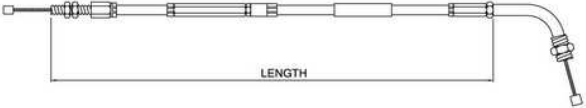


*It is important to select the optimum cable length for your bike

*Select the cable from 3 different length to fit on .

LENGTH OF CABLE

SIZE	LENGTH
QT-001-700	700 - 720 mm
QT-001-900	900 - 920 mm
QT-001-1050	1050 - 1070 mm





Material: 6061 aluminum

- *Combine the anodized aluminum and the replaceable plastic end.
- *Use the replaceable plastic protector to slide well.



Supply Kits- Replaceable Plastic Protector

Material: Plastic

NE-WE01BK



SELECT THE JOINT OF FOOT PEGS FOR YOUR BIKE.

<u>YAMAHA</u>	<u>KAWASAKI</u>	<u>SUZUKI</u>		<u>HONDA</u>
YA11F	KW11F	SU11F	SU12R	HD11F
YA11R	KW11R	SU11R	SU13F	HD11R
YA12R	KW12R	SU12F		
			<u>TRIUMPH</u>	
				TM11R



Ref. YC-424RD

ADJUSTABLE STRUT BAR

YC-424

Material: 6061 aluminum

Color



BRAKE CYLINDER COOLER



Ref. HE-001-SL

Material: 6061 aluminum

HE-001

HE-002

SIZE

P1.25

P1.00



MASTER CYLINDER CAP

Material: 6061 aluminum

Color



YC-221

YC-222

YC-223

YC-224



EXTRA UPPER CLAMP

Material: 6061 aluminum

SIZE

YC-418-M6 M6xP1.0 / Ø22.2mm

YC-418-M8 M8xP1.25 / Ø22.2mm

YC-419-M6 M6xP1.0 / Ø28.6mm

YC-419-M8 M8xP1.25 / Ø28.6mm

Color



YC-418-M6OR

HANDLEBAR RISER

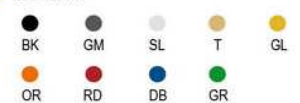
Material: 6061 aluminum

SIZE

YC-201 Ø22.2mm

YC-202 Ø28.6mm

Color



Ref. YC-201-BK





SILICONE RADIATOR HOSE KITS

Material: Silicone
 Working Temperature: -40°C ~180°C
 Max Pressuer: 4 bar
 Nex items development are welcome.



More model requests, please contact NEX.



Ref. SH-KT502OR



Ref. SH-YA510BL

MOTORCYCLE HEAT EXCHANGER

Material: 6061 aluminum

NEX heat exchanger can be easily put on every bike which gets high temperature problems.

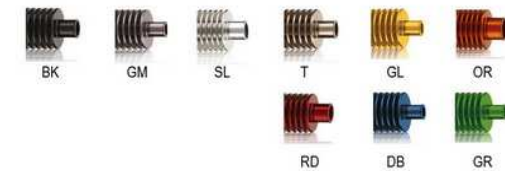
The exchanger can let the temperature drop five degree by the experiment.

SIZE

L70mm Ø14 Ø16 Ø17 Ø18

L100mm Ø19 Ø20 Ø21 Ø22 Ø23 Ø24 Ø25

Color



Ref. HE-100-23OR



Ref. HE-70-18BK



Ref. HE-100-25SL



YC- 810

Material: 6061 aluminum

Color Available in Black,
Blue,Gold,Gunmetal,
Orange,Titanium,
Green,Silver and Red.



YC- 811

Material: 6061 aluminum

Color Available in Black,
Blue,Gold,Gunmetal,
Orange,Titanium,
Green,Silver and Red.



YC- 812 (with silver mesh)

Material: 6061 aluminum

Color Available in Black,
Blue,Gold,Gunmetal,
Orange,Titanium,
Green,Silver and Red.



Ref. YC-813-SL

BAR ENDS

YC- 813 (with real carbon fiber)

Material: 6061 aluminum

Color Available in Black,
Blue,Gold,Gunmetal,
Orange,Titanium,
Green,Silver and Red.



LED LIGHT BAR ENDS



YC- 814



YC- 815

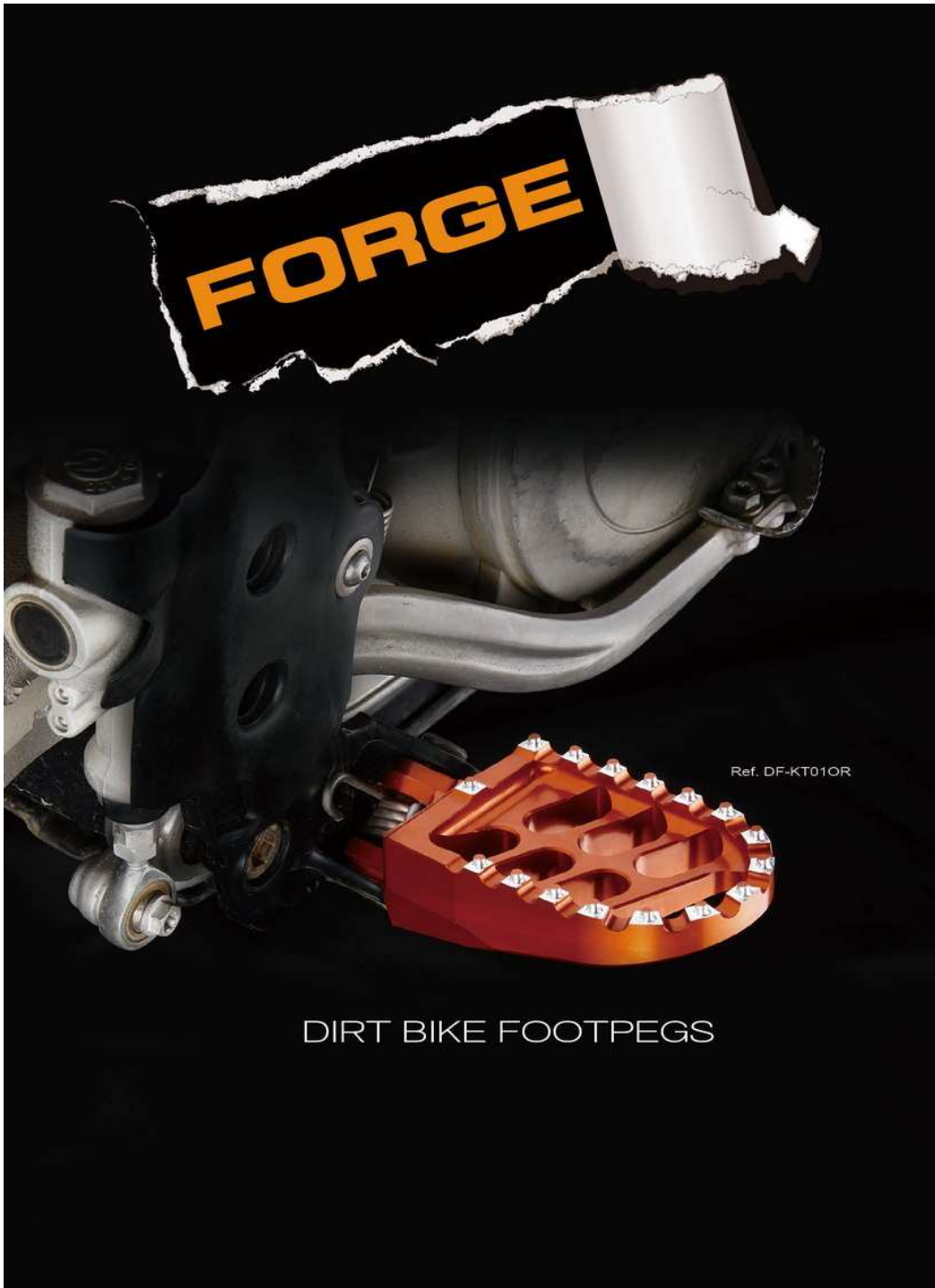


YC- 816



YC- 817





More model requests, please contact NEX.

HONDA



DF-HD01

KTM



DF-KT01

YAMAHA



DF-YA01

HUSQVARNA



DF-HQ01

SUZUKI



DF-SU01



DF-SU02

KAWASAKI



DF-KW01



DF-KW02



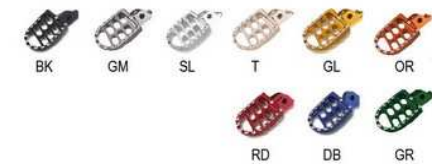
DF-KW03

SGS Safe Certification : 500kgf Loading Test



Material: 6082 forged aluminum

Color Available in Black, Blue, Gold, Gunmetal, Titanium, Green, Orange, Silver and Red.





AIR VALVE

Ref. YC-420GL

Material: 6061 aluminum

SIZE

YC-427 Ø11.3mm

YC-427-1 Ø8.3mm

Color Available in Black,Blue,Cold,Gunmetal,Orange,Titanium,
Green,Silver and Red.



Material: 6061 aluminum

Color Available in Black,Blue,Cold,Gunmetal,Orange,Titanium,
Green,Silver and Red.

SIZE

YC-420 Ø11.3mm

YC-420-1 Ø8.3mm



FOR THE ROAD BIKE

YC- 701

Material: 6061 aluminum



YC- 702

Material: 6061 aluminum



YC- 703

Material: 6061 aluminum



YC- 704

Material: 6061 aluminum



FOR THE OFF - ROAD BIKE

YC- 701-1

Material: 6061 aluminum



YC- 702-1

Material: 6061 aluminum



YC- 703-1

Material: 6061 aluminum





FOR THE ROAD BIKE

FOR THE OFF - ROAD BIKE



YC- 414

Material: 6061 aluminum



YC- 415

Material: 6061 aluminum



YC- 417

Material: 6061 aluminum



YC- 413-1

Material: 6061 aluminum



YC- 414-1

Material: 6061 aluminum



YC- 415-1

Material: 6061 aluminum



YC- 416-1

Material: 6061 aluminum



YC- 417-1

Material: 6061 aluminum





SWINGARM SPOOLS

Ref. YC-801-10RD



SWINGARM SPOOLS

Ref. YC-804-10BK

Material: 6061 aluminum

SIZE

- YC-801-6 M6 XP1.0
- YC-801-8 M8 XP1.25
- YC-801-10 M10XP1.25



Material: Plastic

SIZE

- YC-802-6 M6 XP1.0
- YC-802-8 M8 XP1.25
- YC-802-10 M10 XP1.25



Material: 6061 aluminum

SIZE

- YC-804-6 M6 XP1.0
- YC-804-8 M8 XP1.25
- YC-804-10 M10 XP1.25





Ref. YC-406-GL

CARGO HOOK

Material: 6061 aluminum

SIZE
YC-406 M6

Color Available in Black,Blue,Cold,Gunmetal,Orange,Titanium,
Green,Silver and Red.



BK



GM

SL

GL

OR

RD

DB

GR

T

Material: 6061 aluminum

SIZE
YC-4062-6 Ø6mm
YC-4062-8 Ø8mm

Color Available in Black,Blue,Cold,Gunmetal,Orange,Titanium,
Green,Silver and Red.



Material: 6061 aluminum

SIZE
YC-4061-6 Ø6mm
YC-4061-8 Ø8mm

Color Available in Black,Blue,Cold,Gunmetal,Orange,Titanium,
Green,Silver and Red.





BOLT CAPS

Ref. YC-4073-GL

Not including the screws

Material: 6061 aluminum

Color Available in Black,Blue,Gold,Gunmetal, Orange,Titanium,Green,Silver and Red.

SIZE

Ø6mm Ø8mm Ø10mm

YC-4072



YC-4071



YC-4073



OIL PIPE CLIPS

BD- 5124

Material: 6061 aluminum

Color Available in Black,Blue,Gold,Gunmetal, Green,Orange,Titanium,Silver and Red.



BD- 5124-1

Material: 6061 aluminum

Color Available in Black,Blue,Gold,Gunmetal, Green,Orange,Titanium,Silver and Red.



BD- 5124-2

Material: 6061 aluminum

Color Available in Black,Blue,Gold,Gunmetal, Green,Orange,Titanium,Silver and Red.





YC-501
LEVER BOOTS

Material: Silicone
 Color Available in Black, Blue, Green, Orange, Yellow, White and Red.



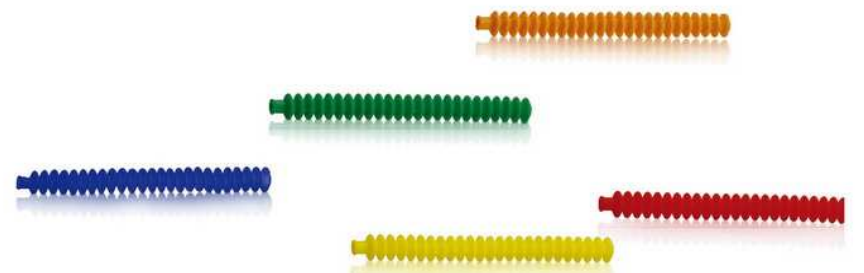
YC-101
CLUTCH CABLE BOOTS

Material: Silicone
 Color Available in Blue, Green, Orange, Yellow and Red.



YC-408
HANDGUARD

Material: Plastic
 Color Available in Black, Blue, Green, Orange, Yellow, White and Red.





REAL CARBON FIBER GAS CAP PROTECTOR

Material: Real Carbon Fiber
Color Available in Black, Blue, Green, Orange,
Yellow and Red.

Ref. YC-603-BK



YC-601

HONDA



YC-602

KAWASAKI



YC-603

SUZUKI



YC-603

SUZUKI



YC-604

YAMAHA



Ref. YC-403

YC-403

DRINK HOLDER

Material: Plastic
Color Available in Black, Blue, Orange,
White and Red.



WT



RD



BL



OR

CARBON FIBER KEY CHAIN

Material: Real Carbon Fiber

BD-806C

BD-810C

BD-811C

BD-812C

BD-813C



YC-422

FRONT FORK STROKE SENSOR

SIZE
Ø41mm Ø43mm Ø48mm Ø50mm



Ref. YC-422-43

YC-902

QUICK RELEASE

LENGTH
14mm





PERFORMANCE HIGH FLOW AIR FILTER

NEX air filter is designed to achieve high air flow with excellent filtration to ensure long engine life. An air filter that possesses of the high air flow, filtration efficiency, washable, reusable and will protect your engine for the life of your vehicle.

More model requests, please contact NEX.



AIR FILTER

VI-005

SIZE

Ø25mm Ø38mm Ø44mm Ø47mm



VI-006

SIZE

Ø25mm Ø38mm Ø44mm Ø47mm



AC-01

CLEANER KIT



VI-007

SIZE

Ø25mm Ø38mm Ø44mm Ø47mm



FRONT FORK NUT

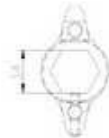
Ref. YC-232-DB

Material: 6061 aluminum

YC-231



YC-232



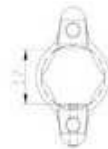
YC-233



YC-234



YC-235



YC-236



Color



BK



GM



SL



T



GL



OR



RD



DB



GR